

Operating Manual

Model #: 115-4DV

Size:

Serial #:

Sales Order:

7400 East 42nd Place
Tulsa, Oklahoma
74145-4744 USA

phone: 918-627-1942
888-628-8258

fax: 918-622-8916

email: sales@controlvalves.com

website: www.controlvalves.com



Global performance. **Personal** touch.

electrically operated deluge valve (energize to open)

SK7000

installation, operating
and
maintenance instructions

model 115-4DV

GENERAL DESCRIPTION

The OCV Model 115-4DV solenoid control deluge valve is designed to open or close in response to an electrical signal. It consists of the following components:

1. **Model 65 Basic Valve**, a hydraulically-operated, diaphragm-actuated, angle valve with an elastomer-on-metal seal.
2. **Model 452 Solenoid Pilot (SK7000)** a three-way, electrically-operated valve.
3. **Model 330P or Model 3600S Three-Way Auxiliary Pilot**, a three-way, hydraulically-operated valve.
4. **Model 159 Y-Strainer**. The strainer protects the pilot system from solid contaminants in the line fluid.
5. Two **Model 141-4 Ball Valves**, useful for isolating the pilot system for maintenance or troubleshooting. (See schematic diagram) Item 5B is a manual override to open the main valve without energizing the solenoid valve.
6. **Model 155 Visual Indicator** is used to visually see the valve's position at a glance. **Model 150** or **Model 31** single or dual limit switch assemblies are also available and can be used to send a remote electrical signal.

At user option, the 115-4DV may also be equipped with the following:

1. Model 150 Limit Switch Assembly (includes

visual indicator). Similar to Model 31 above.

2. **Model 141-3 Flow Control Valve**, set up as a closing speed control or as an opening speed control. Or two 141-3's can be provided to give separate, independent control of both closing and opening speeds.

THEORY OF OPERATION (refer to schematic diagram):

Operation of the 115-4DV is extremely simple. Energizing the coil of the solenoid pilot connects port "1" (supply) to port "2" (common), which pressurizes the diaphragm chamber of the three-way auxiliary pilot. This pilot shifts to relieve pressure from the diaphragm chamber of the main valve. Thus, the main valve opens.

Conversely, deenergizing the coil of the solenoid pilot connects port "2" (common) and port "3" (exhaust), which vents the diaphragm chamber of the three-way auxiliary pilot. The pilot shifts to route full inlet pressure to the diaphragm chamber of the main valve. Thus, the main valve closes fully.

INSTALLATION

The 115-4DV is furnished fully factory-assembled and ready for installation at the appropriate point in the system. The user is referred to the Basic Valve section of this manual for full installation details.

Once the main valve is installed, the solenoid pilot is wired into the control system. This is a simple two-wire hookup.

STARTUP AND ADJUSTMENT



7400 East 42nd Place / Tulsa, OK 74145-4744 USA / 918-627-1942 / 888-OCV-VALV / Fax 918-622-8916 e-mail: sales@controlvalves.com / website: www.controlvalves.com

The following procedures should be followed in the order presented in order to effect an initial startup of the 115-4DV.

1. Make sure the coil of the solenoid pilot is deenergized.
2. Start the pump, or otherwise start the system flowing. The main valve will at this time be fully closed.
3. Carefully loosen one of the pipe plugs in the main valve bonnet until fluid appears around the threads. **Caution: loosening the pipe plug too much will allow the main valve to open.** When only clear fluid (no air) is discharging, retighten the plug.
4. Energize the solenoid pilot. Observe that the main valve opens.
5. Deenergize the solenoid pilot and observe that the valve closes.
6. Utilize the manual override ball valve 5B to assure the deluge valve functions in that mode as well. After the main valve opens, simply reclose 5B and the main valve should reclose.

MAINTENANCE

Due to the simplicity of design of the 115-4DV, required maintenance is minimal. However, the following checks, periodically performed, can do much to keep the valve operating properly and efficiently.

1. Check for chipped or peeling paint. Touch up as required.
2. Check for leaks at fittings and around flanges and connections. Tighten as required.
3. Check for frayed or loose electrical connections.
4. Check the y-strainer screen for buildup of solid material. Clean as required. This point is most important, as a clogged strainer can keep the valve from closing. On new installations, it is recommended that the strainer be checked every day or two until experience dictates a greater or lesser interval. Strainer maintenance is covered in detail on a special page later in this manual.

TROUBLESHOOTING

In the event of malfunction of the 115-4DV, the following guide should enable the technician to isolate the specific cause of the problem and take the appropriate corrective action.

A. MAIN VALVE FAILS TO OPEN:

1. Valve closed upstream or downstream of the 115-4DV. Open as required.
2. Solenoid not energized. Check electrical system.
3. Solenoid pilot stuck closed or coil burned out. Assure correct voltage is being supplied to the coil. Coil might need replacing.
4. Stem of three-way auxiliary pilot binding or seat deteriorated. Disassemble pilot and determine cause. See 330P or 3600S section of this manual.
5. Stem of main valve binding. Disassemble valve and determine cause. See the Model 65 Basic Valve section of this manual. A quick way to determine whether or not the main valve is binding, is to utilize the manual override ball valve 5B.

B. MAIN VALVE FAILS TO CLOSE:

1. Upstream pilot system ball valve 5A closed. Open as required.
2. Solenoid not deenergized. Check electrical system.
3. Strainer clogged. Clean as required.
4. Solenoid pilot stuck open. Check for internal obstruction.
5. Three-way auxiliary pilot diaphragm ruptured, stem binding or seat deteriorated. Disassemble pilot and determine cause. See 330P or 3600S section of this manual.
6. Close pilot system ball valve 5A and loosen a pipe plug in the main valve bonnet. A **continuous** discharge of fluid from the loosened plug indicates that the main valve diaphragm is rup-

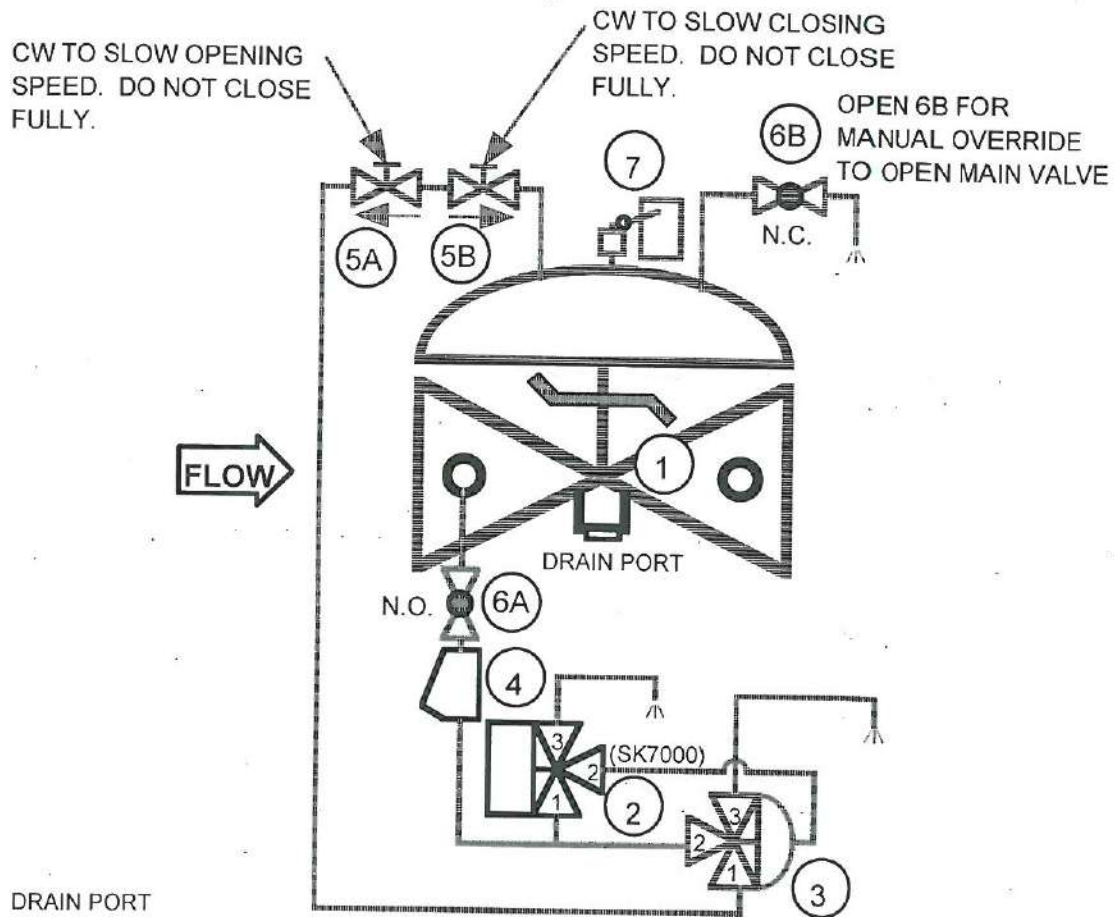
tured. Replace diaphragm. See the Model 65 Basic valve section of this manual. **Caution: when venting the main valve bonnet to atmosphere, the main valve will open.**

7. Main valve stem binding or object in valve. Disassemble valve and determine cause. See Basic Valve section of this manual.

MODEL 115-4DV

RON
9-26-05

DELUGE SOLENOID CONTROL VALVE with LIMIT SWITCH ASSEMBLY and SEPARATE OPENING / CLOSING SPEED CONTROLS (Energize to Open)



DRAIN PORT
(WATER SUPPLY DRAIN)
1/2" NPTF ON 1 1/2" AND 2"

ITEM	PART NO.	QTY	DESCRIPTION
1	65	1	BASIC VALVE ASSEMBLY
2	452	1	THREE-WAY SOLENOID PILOT
3	3600S or 330P	1	ACCELERATOR PILOT
4	159	1	Y-STRAINER
5	141-3	2	FLOW CONTROL VALVE (OP-CL SPEED CONT)
6	141-4	2	BALL VALVE
7	31-1EX	1	LIMIT SWITCH ASSEMBLY

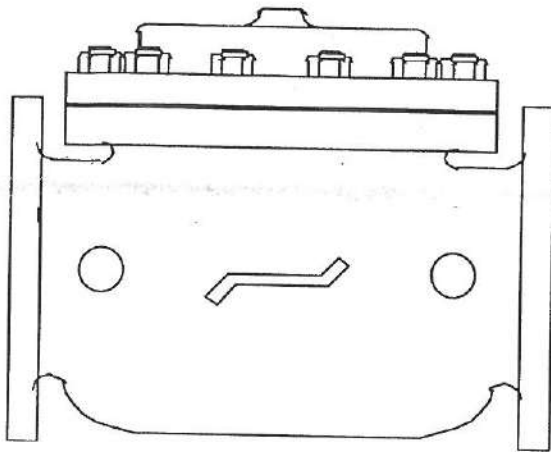


7400 East 42nd Place • Tulsa, Oklahoma 74145-4744 U.S.A.
Phone: 888-628-8258 • 918-627-1942 • Fax: 918-622-8916 • e-mail: ocv@controlvalves.com
• website: www.controlvalves.com

installation, operating, and maintenance instructions

series 65

basic control valve



GENERAL DESCRIPTION

The OCV Series 65 is a hydraulically-operated, diaphragm-actuated valve. It is available in either a globe (Model 65) or angle (Model 65A) configuration. The diaphragm is nylon-fabric bonded with synthetic rubber and forms a sealed chamber in the upper portion of the valve, separating operating pressure from line pressure. An elastomeric seat disc forms a tight seal with the valve seat when pressure is applied above the diaphragm.

FUNCTIONAL DESCRIPTION

Because the Series 65 is a hydraulically operated valve, it requires a minimum line pressure of approximately 5 psig in order to function. The valve functions on a simple principle of pressure differential. The line pressure at the inlet of the valve is bypassed through the pilot control piping to the diaphragm chamber of the valve. This pressure, together with the valve spring, works against the pressure under the valve seat. Because the effective area of the diaphragm is greater than that of the seat, the valve is held tightly closed. As the controlling pilot(s) allow the pressure to bleed off the diaphragm chamber, the two opposing pressures begin to balance and the valve will begin to open. The valve can be used to perform a simple on-off function, or with the proper pilot system, a modulating, or regulating function.

In cases where the line fluid is unusually dirty, or is otherwise unsuitable for operating the valve, an independent operating pressure source may be employed. The pressure available from such a source must be equal to, or greater than, line pressure.

INSTALLATION

In order to insure safe, accurate and efficient operation of the OCV control valve, the following list of check-points and procedures should be followed when installing the valve.

1. Make a careful visual inspection of the valve to insure that there has been no damage to the external piping, fittings or controls. Check that all fittings are tight.
2. Thoroughly flush all interconnecting piping of chips, scale and foreign matter prior to mounting the valve.
3. Install the valve in the line according to the flow arrow on the inlet flange. The arrow should point downstream.
4. Allow sufficient room around the valve for ease of adjustment and maintenance service.

In addition, it is highly recommended that:

1. Isolation valves (eg., gate or butterfly) be installed on the inlet and discharge sides of the valve to facilitate isolating the valve for maintenance.
2. Pressure gauges be installed at the inlet and outlet sides of the valve to provide monitoring of the valve during initial start-up and during operation. The body side ports, if unused by the pilot system, provide a convenient connection for the gauges.
3. All valves larger than 6" be installed horizontally, i.e., with the bonnet pointed up, for ease of adjustment and maintenance servicing.

MAINTENANCE

The OCV control valve requires no lubrication and a minimum of maintenance. However, a periodic inspection should be established to determine how the fluid being handled is affecting the efficiency of the valve. In a water system, for example, the fluid velocity as well as the substances occurring in natural waters, such as dissolved minerals and suspended particles, vary in every installation. The effect of these actions or substances must be determined by inspection. It is recommended that an annual inspection, which includes examination of the valve interior, be conducted. Particular attention should be paid to the elastomeric parts, i.e., the diaphragm and seat disc. Any obviously worn parts should be replaced.

REPAIR PROCEDURES

In the event of malfunction of the OCV control valve, troubleshooting should be conducted according to the procedures outlined for the specific model of valve. Then, if those steps indicate a problem with the main valve, this section will outline the procedures necessary to correct the problem.

Problems with the main valve can be classed in three basic categories:

1. VALVE FAILS TO OPEN

- a. Diaphragm damaged* - See Procedure A

- b. Stem binding - See Procedure B

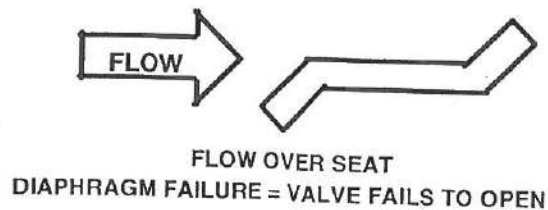
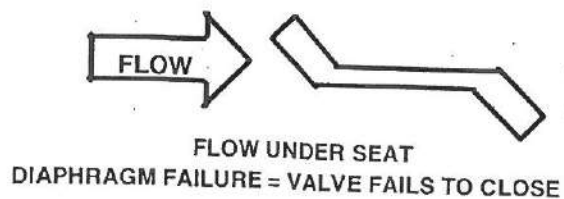
2. VALVE FAILS TO CLOSE

- a. Diaphragm damaged* - See Procedure A
- b. Stem binding - See Procedure B
- c. Object lodged in valve - See Procedure B

3. VALVE OPENS AND CLOSES BUT LEAKS WHEN CLOSED

- a. Seat disc damaged - See Procedure C
- b. Seat ring damaged - See Procedure D

**A diaphragm failure can prevent the valve from either opening or closing, depending on the flow direction. Most water service valves flow "under the seat", in which case a diaphragm failure will keep the valve from closing. On the other hand, most fuel service valves flow "over the seat", in which case a diaphragm failure will keep the valve from opening. To determine which you have, examine the bridge mark cast into the side of the valve body, then compare it with the figures below.*



PROCEDURE A : DIAPHRAGM REPLACEMENT

1. Isolate the valve from the system by closing upstream and downstream block valves.

2. Loosen one of the tubing connections on the bonnet. Allow any residual pressure to bleed off.
3. Remove all tubing connected at the bonnet.
4. Remove the bonnet nuts.
5. Remove the bonnet. If the bonnet sticks in place, it may be loosened by rapping sharply around its edge with a rubber-headed mallet. *NOTE: 8" and larger valves are equipped with eye bolts through which a chain can be fastened to aid in lifting the bonnet.*
6. Remove the spring.
7. Remove the diaphragm plate capscrews and the diaphragm plate.
8. Remove the old diaphragm.
9. Making sure the dowel pin holes are in the proper location, place the new diaphragm over the studs and press down until it is flat against the body and spool.
10. Replace the diaphragm plate and the diaphragm plate capscrews.
11. Tighten all diaphragm plate capscrews snugly.
12. Replace the spring.
13. Replace the bonnet and reinstall the bonnet nuts.
14. Tighten the bonnet nuts snugly using a criss-cross tightening pattern.
15. Reinstall the control tubing.
16. Reopen the upstream and downstream block valves.
17. Before placing the valve back in service, perform the air bleed procedure described in the first section of this manual.

PROCEDURE B: CORRECTION OF BINDING STEM

1. Perform Steps 1 thru 6 of Procedure A, above.
2. Remove the spool assembly from the valve. *NOTE: On smaller valves, this can be accomplished simply by grasping the stem and pulling upward. Valves 6" and larger have the top of the stem threaded to accept an eyebolt to aid in lifting the spool out of the body. 6" thru 12" valves are threaded 3/8-16. 14" and 16" valves are threaded 5/8-11.*
3. Carefully examine both ends of the stem for deep scratches, scoring or buildup of mineral deposits. Polish the stem if necessary using a fine grade of emery cloth.
4. Similarly, examine and polish the upper bushing (in the bonnet) and the lower guide (in the seat ring).
5. Reinstall the spool assembly.
6. Reassemble the valve, following Steps 12 thru 17 in Procedure A.

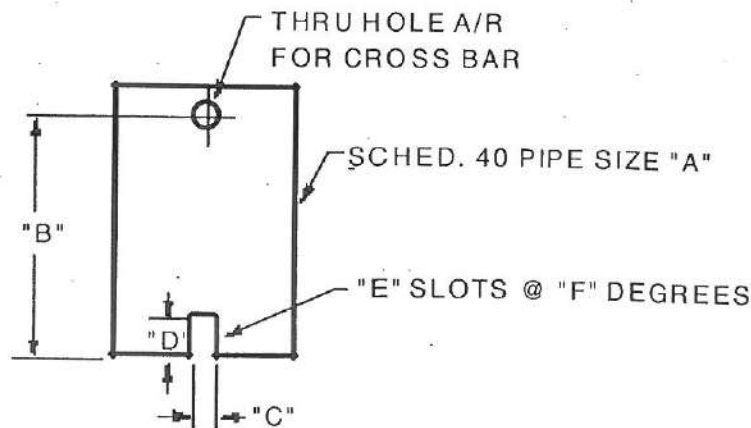
PROCEDURE C: SEAT DISC REPLACEMENT

1. Perform Steps 1 and 2 of Procedure B, above.
2. With the spool assembly removed from the body, remove the seat retainer screws.
3. Slide the seat retainer off the lower end of the stem.
4. Remove the seat disc from its groove in the spool. *NOTE: The seat disc may fit quite tightly in the groove. If necessary, it may be pried out using a thin-bladed screwdriver or similar tool.*
5. Install the new seat disc in the groove.
6. Reinstall the seat retainer and tighten the seat retainer screws.
7. Reassemble the valve, following Steps 5 and 6 of Procedure B.

PROCEDURE D: SEAT RING REPLACEMENT

NOTE: It is rare for a seat ring to require replacement. Minor nicks and scratches in the seating surface can usually be smoothed out with emery cloth.

1. Perform Steps 1 and 2 of Procedure B, above.
2. If you are working on a 4" or smaller valve, follow Steps 3 thru 9, below.
3. If you are working on a 6" or larger valve, follow Steps 10 thru 16, below.
4. Seat rings in valves 4" and smaller are threaded into the valve body. To remove, you will need a special seat ring tool. You may fabricate one using standard pipe as shown in the sketch below, or one may be purchased from OCV.
5. Using the seat ring tool, unthread the seat ring from the body.
6. Remove the old o-ring from the counterbore in the body.
7. Install the new o-ring in the counterbore.
8. Using the seat ring tool, install the new seat ring.
9. Reassemble the valve, following Steps 5 & 6 of Procedure B.
10. Seat rings in valves 6" and larger are bolted into the body with socket head capscrews. In addition you will note that the seat ring is equipped with additional threaded holes that may be used for "jacking" the seat ring out of the body.
11. Remove the socket head capscrews.
12. Remove the old seat ring from the body by temporarily installing two or more of the capscrews in the "jacking" holes.
13. Install a new o-ring in the groove of the new seat ring. Lubricate the o-ring and outer seat ring wall with Vaseline® or similar lubricant.
14. Install the new seat ring in the body, making sure that the capscrew holes line up.
15. Replace and tighten all the capscrews.
16. Reassemble the valve, following Steps 5 and 6 of Procedure B.



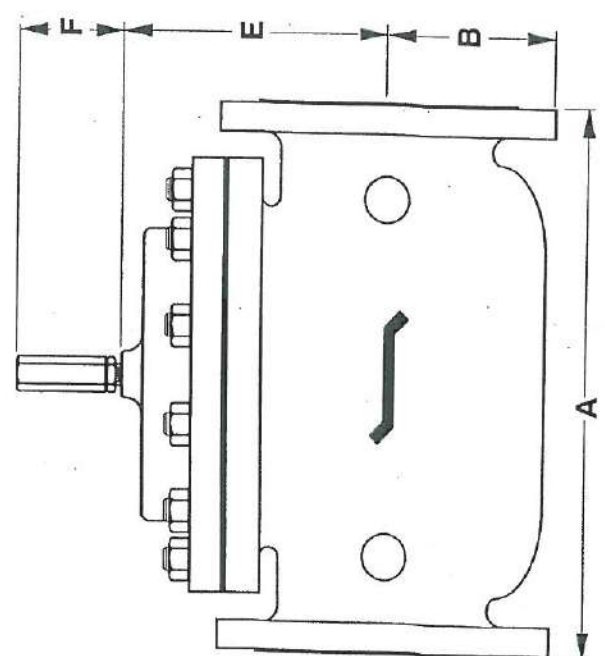
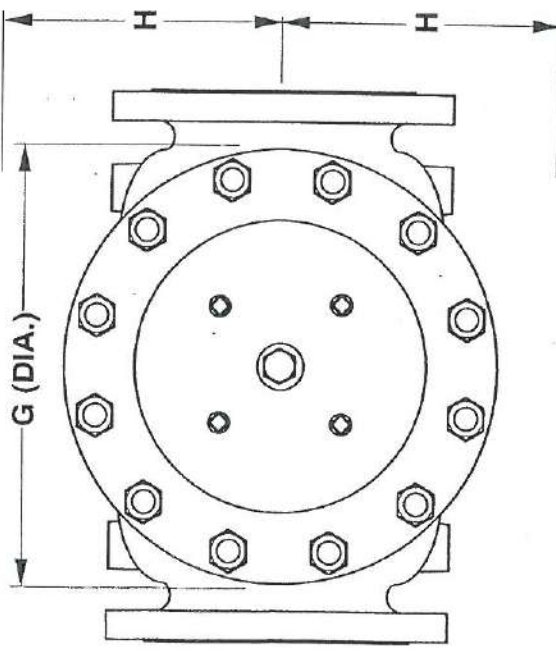
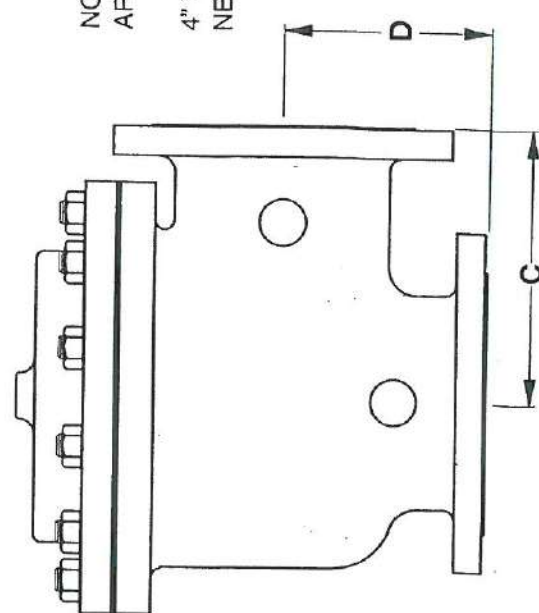
VALVE SIZE	"A" PIPE SIZE	"B" MIN. LENGTH	"C" SLOT WIDTH	"D" SLOT DEPTH	"E" NO. OF SLOTS	"F" SLOT SPACING
1-1/4"	3/4"	6"	3/8"	3/8"	2	180°
1-1/2"	3/4"	6"	3/8"	3/8"	2	180°
2"	1-1/2"	7"	3/8"	3/8"	2	180°
2-1/2"	2"	8"	1/2"	1/2"	3	120°
3"	2-1/2"	9"	5/8"	5/8"	2	180°
4"	3"	10"	5/8"	5/8"	2	180°

REVISED 3-17-97

DIM	ANSI CLASS	VALVE SIZE													
		1 1/4	1 1/2	2	2 1/2	3	4	6	8	10	12	14	16	24	
A	S.E	8.75	8.75	9.88	10.50	13.00	-	-	-	-	-	-	-	-	-
	150	8.50	8.50	9.38	10.50	12.00	15.00	17.75	25.38	29.75	34.00	39.00	40.38	62.00	
	300	8.75	8.75	9.88	11.12	12.75	15.62	18.62	26.38	31.12	35.50	40.50	42.00	63.75	
B	SE	1.44	1.44	1.69	1.88	2.25	-	-	-	-	-	-	-	-	
	150	2.31	2.50	3.00	3.50	3.75	4.50	5.50	6.75	8.00	9.50	10.62	11.75	16.00	
	300	2.62	3.06	3.25	3.75	4.12	5.00	6.25	7.50	8.75	10.25	11.50	12.75	18.00	
C	SE	4.38	4.38	4.75	6.00	6.50	-	-	-	-	-	-	-	-	
	150	4.25	4.25	4.75	6.00	6.00	7.50	10.00	12.69	14.88	17.00	-	20.81	-	
	300	4.38	4.38	5.00	6.38	6.38	7.81	10.50	13.19	15.56	17.75	-	21.62	-	
D	SE	3.12	3.12	3.88	4.00	4.50	-	-	-	-	-	-	-	-	
	150	3.00	3.00	3.88	4.00	4.00	5.50	6.00	8.00	11.38	11.00	-	15.69	-	
	300	3.25	3.25	4.12	4.38	4.38	5.81	6.50	8.50	12.06	11.75	-	16.50	-	
E	ALL	6.00	6.00	6.00	7.00	6.50	7.92	10.00	11.88	15.38	17.00	18.00	19.00	27.00	
F	ALL	3.88	3.88	3.88	3.88	3.88	3.88	3.88	3.88	6.38	6.38	6.38	6.38	8.00	
G	ALL	6.00	6.00	6.75	7.69	8.75	11.75	14.00	21.00	24.50	28.00	31.25	34.50	52.00	
H	ALL	10.00	10.00	11.00	11.00	11.00	12.00	13.00	14.00	17.00	18.00	20.00	20.00	28.50	

NOTE: 3" VALVE DIMENSIONS ARE FOR NEW MODEL 3100

4" VALVE DIMENSIONS ARE FOR NEW MODEL 4400



OCV Control Valves
TULSA, OKLAHOMA U.S.A.

GENERAL VALVE DIMENSIONS

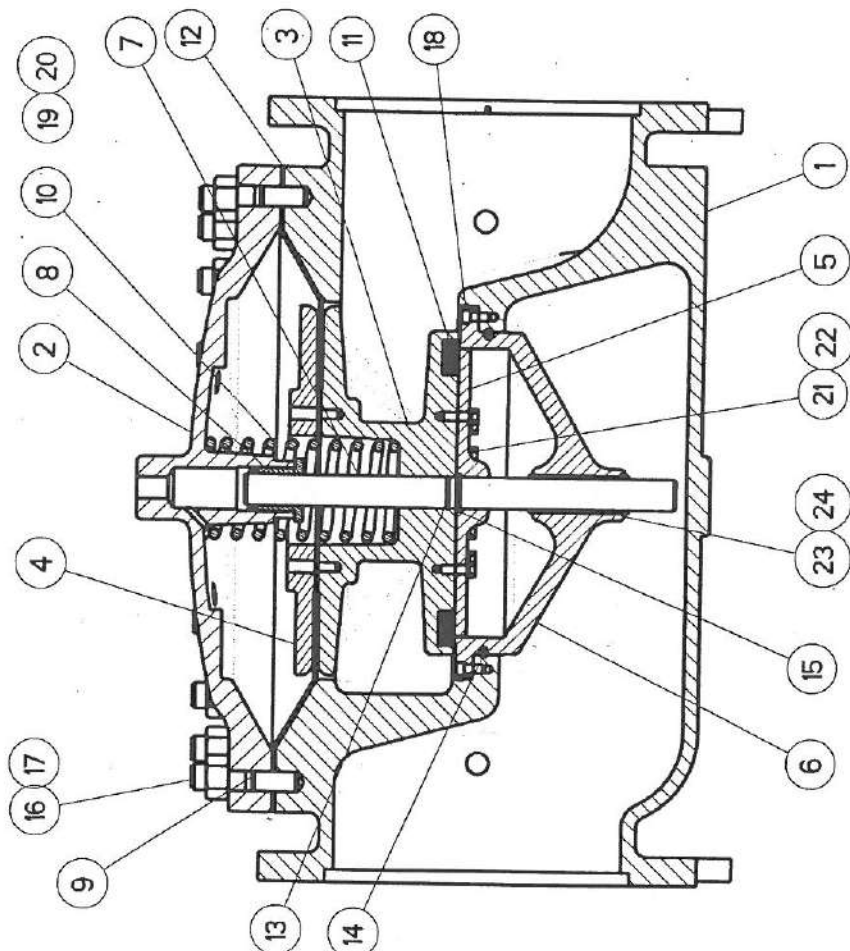
TOLERANCES
 FRACTIONAL ±1/64
 DECIMAL ±.005
 MACH. FINISH 125/
 ANGULAR ±1/2°

DRAWN BY: SDJ
 DATE: 10-6-97

CHKD. BY: A
 DATE: 65D

SIZE: A
 DRAWING NUMBER: 65D
 REV. B

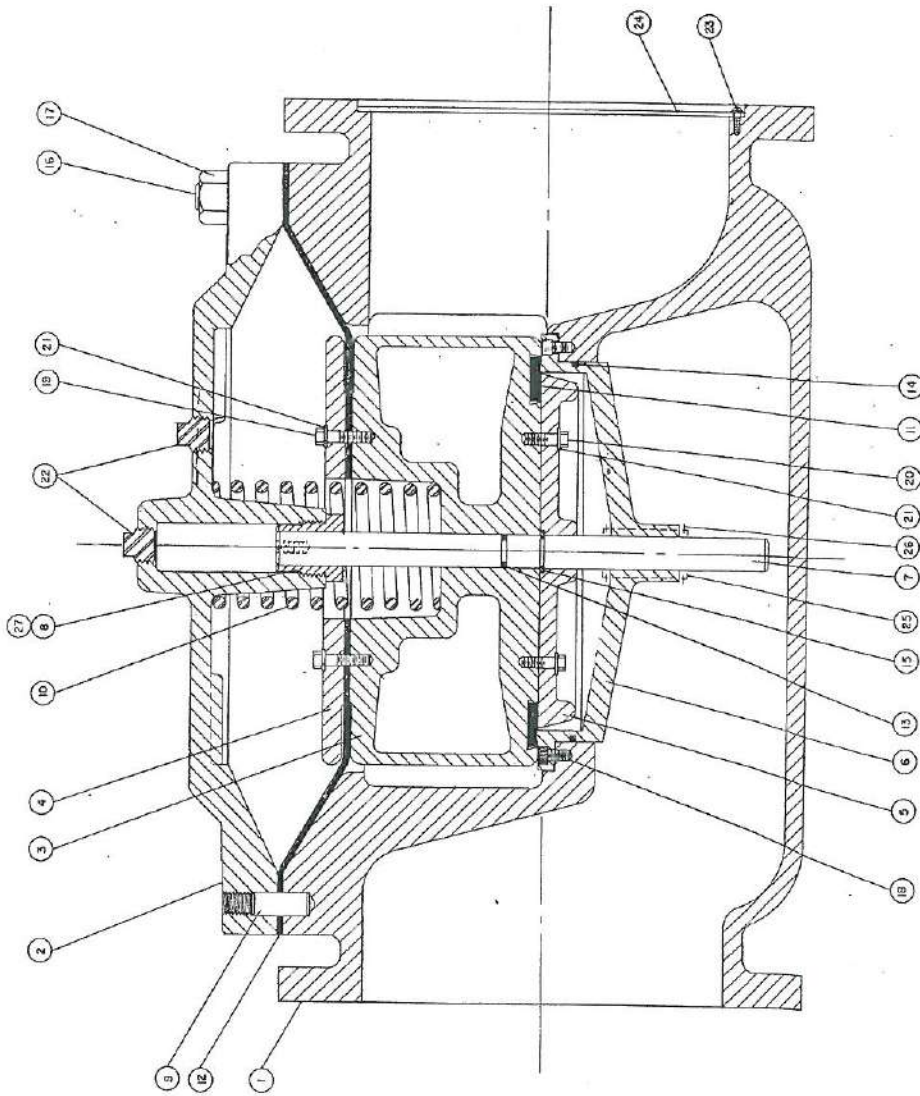
REV. A SDJ 6-6-02
 REV. B SDJ 2-3-03



ITEM	PART NO.	QTY	DESCRIPTION	MATERIAL
1	301006	1	BODY	DUCT. IRON
2	303039	1	BONNET	DUCT. IRON
3	305026	1	SPOOL	DUCT. IRON
4	307006	1	DIAPHRAGM PLATE	DUCT. IRON
5	309006	1	SEAT RETAINER	DUCT. IRON
6	311128	1	SEAT RING	BRONZE
7	31728(b)	1	STEM	STN. STL.
8	320103	1	UPPER BUSHING	BRONZE
9	320010(b)	1		DEL-RIN
10	620012	2	DOWEL PIN	STN. STL.
11	650734	1	SPRING	STN. STL.
12	690539(a)	1	SEAT DISC	BUNA-N
13	690006(a)	1	DIAPHRAGM	NYLON/BUNA-N
14	61023(a)	1	O-RING	BUNA-N
15	610456(a)	1	O-RING	BUNA-N
16	630716	1	SNAP RING	STN. STL.
17	300022	20	STUD	ZN PL STL
18	590028	20	NUT	ZN PL STL
19	530711	16	SKT HD CAPSCREW	STN. STL.
20	531723	12	HEX HD CAPSCREW	STN. STL.
21	685703	12	LOCK WASHER	STN. STL.
22	531702	12	HEX HD CAPSCREW	STN. STL.
23	685701	12	LOCK WASHER	STN. STL.
24	300097(b)	1	LOWER BUSHING	TEFLON
25	630714(b)	2	SNAP RING	STN. STL.

(a) = RECOMMENDED SPARE PARTS.
 (b) = PARTS FURNISHED WITH "STAINLESS STEEL TRIM."

E		D		C		B		A		CHG		REVISIONS		REF DWG NO'S		
ECN	DATE	BY	NO. REC'D	MATERIAL	TOLERANCES	DRAWN BY	DATE	SDJ	01-14-05	SCALE	12.5%	CHKD BY	DATE	SIZE	REV	
				150# DIBT 150# DIST	UNLESS NOTED XX ±.015 XXX ±.005 ANGULAR ±0.5° MACH. FINISH 125									A		
														DRAWING NUMBER		1550
														OCV Control Valves		TULSA OKLAHOMA USA
														12" BASIC VALVE ASSEMBLY		



- NOTES:**
1. WHEN ORDERING PARTS, PLEASE SPECIFY, SERIES NUMBER, PART NUMBER AND MATERIAL.
 2. Δ RECOMMENDED SPARE PARTS.
 3. * ORIFICE PLATE, FURNISHED ON RATE OF FLOW CONTROL VALVE ONLY.
 4. ○ PARTS USED WHEN STAINLESS STEEL SEAT RING IS FURNISHED.
 5. VITON ELASTOMERS ALSO AVAILABLE.

ITEM	Q.C.V. NO.	QTY	DESCRIPTION	MATERIAL	TOLEANCES	DATE	REV.
○ 27	300068	1	BUSHING—UPPER	STN. STEEL			
○ 26	630718	2	SNAP RING	STN. STEEL			
○ 25	300078	1	BUSHING—LOWER	STN. STEEL			
○ 24	308708	1	ORIFICE PLATE	STN. STEEL			
○ 23	532714	8	SCREW, ROUND HEAD	STN. STEEL			
○ 22	556004	A/R	PIPE PLUG	CAD. PL. ST.			
○ 21	685703	32	WASHER, LOCK	STN. STEEL			
○ 20	531704	16	SCREW, HEX. HD. CAP	STN. STEEL			
○ 19	531723	16	SCREW, HEX. HD. CAP	STN. STEEL			
○ 18	530712	16	SCREW, SOC. HD. CAP	STN. STEEL			
○ 17	590029	20	NUT, HEX.	CAD. PL. ST.			
○ 16	300023	20	STUD	CAD. PL. ST.			
○ 15	630419	1	SNAP RING	STEEL			
○ 14	610463	1	1/2" RING	BUNA-N			
○ 13	610320	1	1" RING	BUNA-N			
○ 12	690008	1	DIAPHRAGM	NYLON, BUNA-N			
○ 11	690308	1	SEAT	BUNA-N			
○ 10	650728	1	SPRING	STN. STEEL			
○ 9	620011	2	DOWEL PIN	STN. STEEL			
○ 8	301021	1	BUSHING	BRONZE			
○ 7	315708	1	STEM	STN. STEEL			
○ 6	311708	1	SEAT RING	STN. STEEL			
○ 5	311108	1	SEAT RING	BRONZE			
○ 4	309508	1	SEAT RETAINER	ALUMINUM			
○ 3	309608	1	SEAT RETAINER	DUCTILE IRON			
○ 2	307508	1	DIAPHRAGM PLATE	ALUMINUM			
○ 1	307008	1	DIAPHRAGM PLATE	DUCTILE IRON			
○ 305508	1	SPOOL	ALUMINUM				
○ 306608	1	SPOOL	DUCTILE IRON				
○ 303508	1	BONNET	ALUMINUM				
○ 303308	1	BONNET	STEEL				
○ 303008	1	BONNET	CAST IRON				
○ 301508	1	BODY, 150 LB.	ALUMINUM				
○ 301308	1	BODY, 150 LB.	STEEL				
○ 301008	1	BODY, 125 LB.	CAST IRON				
○ 301708-300LB			STEEL				
○ 301808-250LB			CAST IRON				

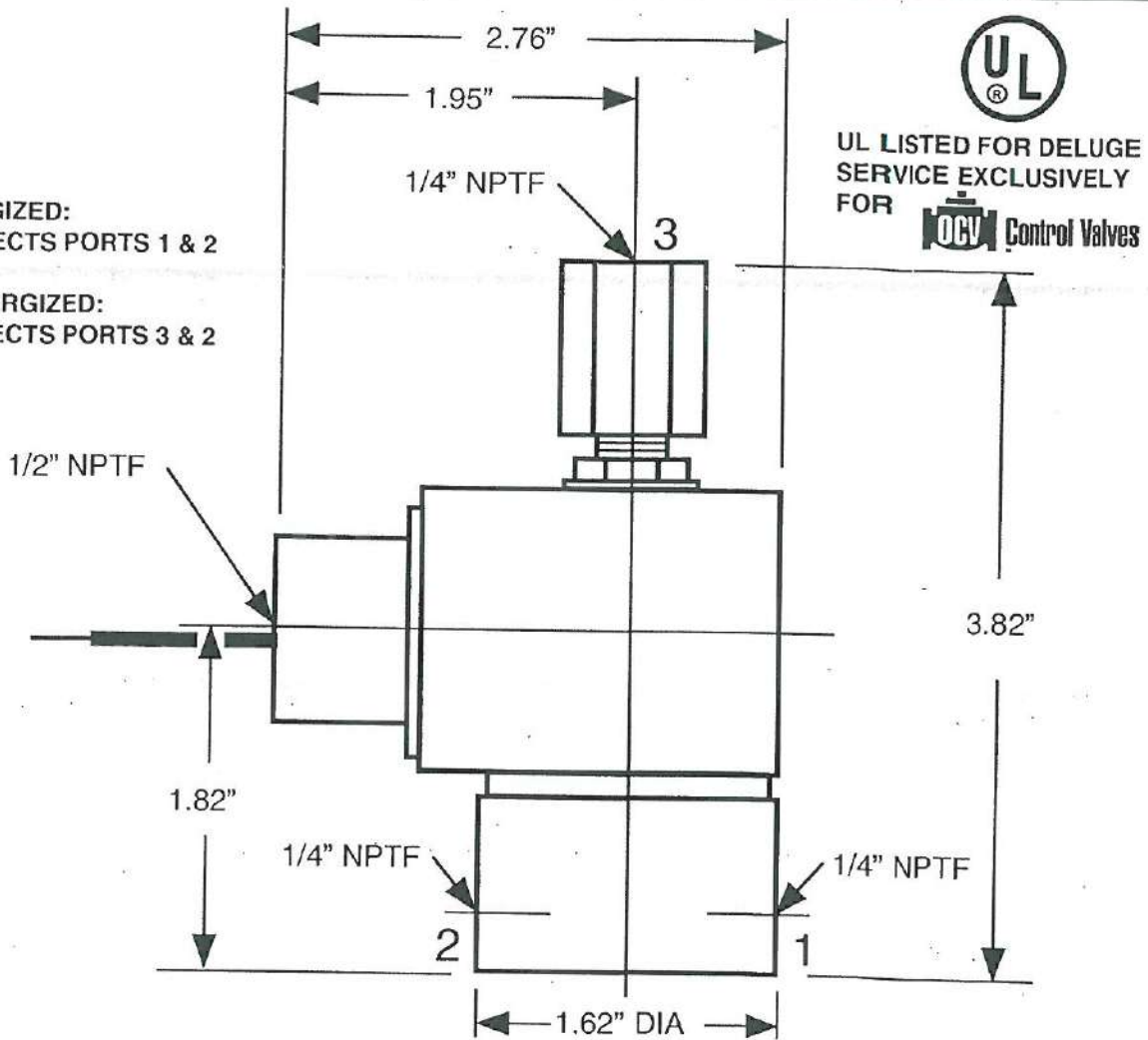
E	D	C	B	A

MATERIAL: _____
 TOLERANCES: _____
 UNLESS NOTED OTHERWISE, ALL DIMENSIONS ARE TO BE HOLD TO ±0.005" UNLESS OTHERWISE SPECIFIED.
 NO INFO: _____
 DATE: _____
 REV.: _____

16" BASIC VALVE
 BUSINESS ADDRESS: _____

**ENERGIZED:
CONNECTS PORTS 1 & 2**


**DEENERGIZED:
CONNECTS PORTS 3 & 2**



OCV MODEL 452 SOLENOID VALVE
 MULTIPURPOSE (UNIVERSAL)
 3 WAY SOLENOID VALVE
 BODY - 430F SS
 SEALS - NBR (BUNA-N)
 SLEEVE TUBE - 303 OR 304 SS
 PLUNGER - 430FR SS
 STOP - 430FR SS
 SPRINGS - 18-8 SS
 SHADING RING - COPPER
 PILOT ORIFICE - 303 SS

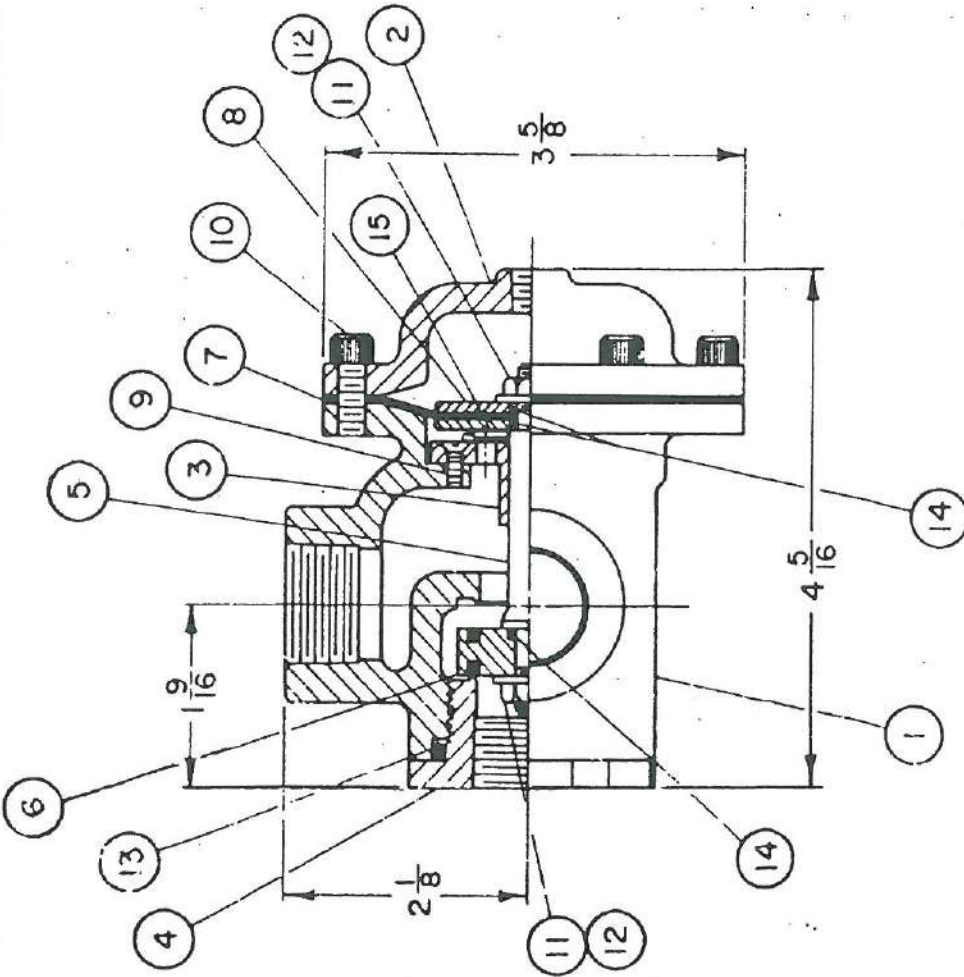
MAX PRES DIF = 400PSI (UL WP = 300 PSIG)
 Cv FACTOR = .024
 PIPE SIZE = 1/4"
 VOLTAGE RANGES = 24/60, 120/60, 240/60, 220/60, 24/60 V/HZ
 12, 24, 30, 48, 120, 125, 140, 250 VDC
 24/50, 110/50, 120/50, 240/50 V/HZ
 POWER CONSUMPTION = 10 WATTS, CLASS H COIL
 ELECTRICAL CONN = 1/2" CONDUIT
 UL LISTED
 NEMA 4, 4X, 7 & 9 (UL LISTED FOR HAZARDOUS LOCATIONS CLASS I,
 GROUPS C AND D, CLASS II, GROUPS E, F AND G)
 LEAKAGE - BUBBLETIGHT
 MAX AMBIENT TEMP = 65.5C (150 F)
 MOUNTING POS = ANY

UL
 UL LISTED FOR DELUGE
 SERVICE EXCLUSIVELY
 FOR **OCV Control Valves**

				MATERIAL	TOLERANCES		 TULSA, OKLAHOMA U.S.A. 3 WAY SOLENOID VALVE MODEL 452 (UNIVERSAL)		
					N/A				
CHG	E.C. NO.	DATE	BY	NO. REQ'D	DRAWN BY RON	DATE 1-28-99	SIZE	DRAWING NUMBER	REV.
REVISIONS				SCALE NONE	CHKD. BY	DATE	A	452	

NOTE.

- 1. WHEN ORDERING PARTS PLEASE SPECIFY, ITEM NO., PART NO. AND MATERIAL
- 2. ▲ RECOMMENDED SPARE PARTS.



ITEM	PART NO.	QTY.	DESCRIPTION	MATERIAL
15	65717	1	SPRING	STAINLESS STEEL
14	161010	3	O-RING	VITON
13	610222	1	O-RING	BUNA-N
12	685700	2	LOCKWASHER	STAINLESS STEEL
11	590712	2	HEX HEAD JAM NUT	STAINLESS STEEL
10	530701	6	SOCKET HD. CAPSCREW	STAINLESS STEEL
9	532735	2	FLAT HEAD SCREW	STAINLESS STEEL
8	308135	2	DIAPHRAGM PLATE	BRASS
7	694035	1	DIAPHRAGM PLATE	STAINLESS STEEL
7	694135	1	DIAPHRAGM	BUNA-N
6	310736	1	SEAT DISC	VITON
6	310737	1	SEAT DISC	STN. STL./BUNA-N
5	314735	1	STEM	STN. STL./VITON
5	314735	1	STEM	STAINLESS STEEL
4	300171	1	ADAPTER	BRASS
4	300771	1	ADAPTER	STAINLESS STEEL
3	300164	1	GUIDE PLATE	BRASS
3	300764	1	GUIDE PLATE	STAINLESS STEEL
2	304135	1	BONNET	BRONZE
2	304735	1	BONNET	STAINLESS STEEL
1	302135	1	BODY	BRONZE
1	302735	1	BODY	STAINLESS STEEL

PARTS LIST	
MATERIAL	TOLERANCES
	UNLESS NOTED
	FRACTIONAL ± 1/64
	DECIMAL ± .008
	MACH FINISH 12.5
	ANGULAR ± 1/2°
NO RECD	DRAWN BY DATE
SCALE	BRW 7-28-93
	CHKD BY DATE

REVISIONS		REF DWG NO'S
CHG	E C NO	DATE BY

Mosey Control Valves
MADE IN CALIFORNIA U.S.A.

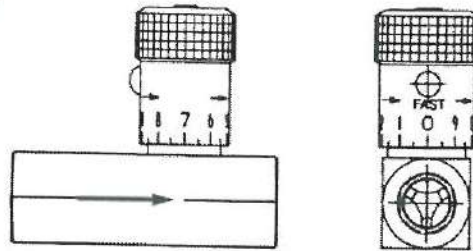
THREE-WAY PILOT

SIZE	B	DRAWING NUMBER	3600S
RIV			A

DESCRIPTION



The Model 141-3 Flow Control Valve is an adjustable restriction device, installed in the control circuit tubing. The flow control valve differs from a standard needle valve in that it includes an internal check valve. Thus it allows free flow in one direction (through the check) and restricted flow in the other direction (through the needle). The setting of the flow control valve meters the flow into or out of the main valve diaphragm chamber, thus controlling either the opening or closing speed of the main valve. These can be installed in series for separate opening and closing speed control. Restricted flow is in the direction of the flow arrow on the body.

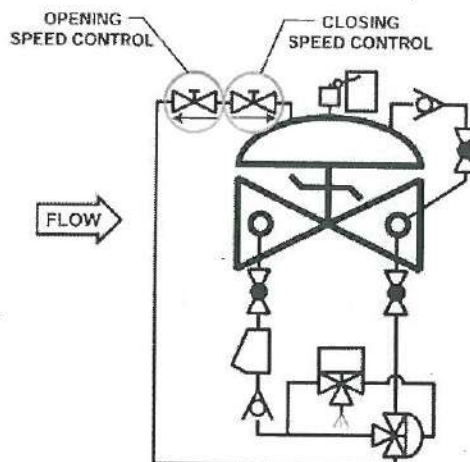


MODEL 141-3 MATRIX

MATERIAL	PART NUMBER	INLET/OUTLET (NPT)	A	USED ON VALVE SIZE*
Brass	682100	1/4	2 3/8	1 1/4"-2"
Brass	682101	3/8	2 3/4	2 1/2"-6"
Brass	682102	1/2	3 1/4	8"-10"
Brass	682103	3/4	3 7/8	12"-16"
Stn. Steel	682700	1/4	2 3/8	1 1/4"-2" Stn.
Stn. Steel	682701	3/8	2 3/4	2 1/2"-6"
Stn. Steel	682702	1/2	3 1/4	8"-10"
Stn. Steel	682703	3/4	3 5/8	12"-16"

Note: Flow control valve use and size may vary on valve application. Consult factory.

SCHEMATIC SYMBOL

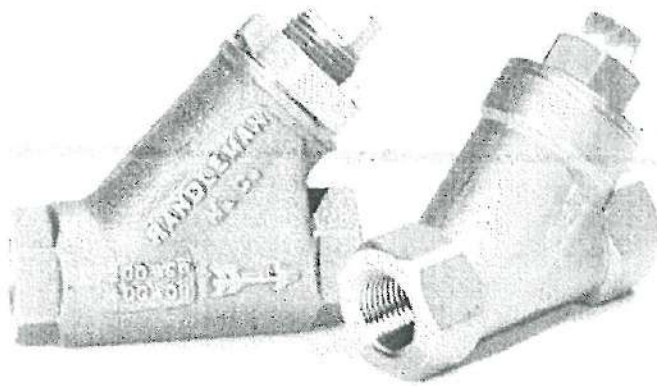


The Model 141-3 Flow Control Valve is shown on OCV Valve Schematics as:



EXAMPLE: Shown here on a MODEL 125 Pump Control Valve as separate opening and closing speeds.

Flow Control Valves 141-3

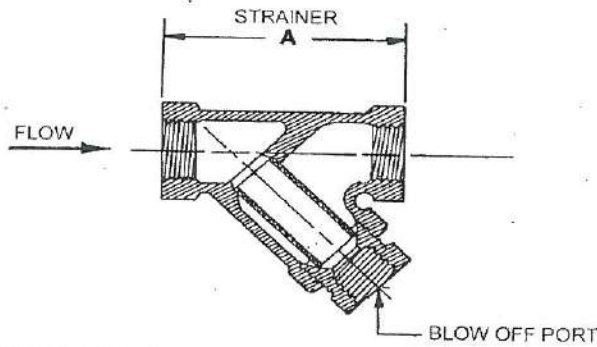


DESCRIPTION

MODEL 159 Y-STRAINER
 The 159 Y-Strainer installs in the inlet piping of the pilot system and protects the pilot system from solid contaminants in the line fluid. It is the standard strainer for water service valves.

MODEL 159 Y-STRAINER MATRIX

MATERIAL	PART NUMBER	INLET/OUTLET (NPT)	BLOW OFF PORT (NP)	A	STD. MESH	USED ON VALVE SIZE
Bronze	660100	3/8	3/8	2 11/16	24	1 1/4"-6"
Bronze	660101	1/2	3/8	2 5/8	24	8"-10"
Bronze	660102	3/4	3/8	3 5/16	24	12"-16"
Stn. Steel	660700	3/8	1/4	2 1/2	20	1 1/4"-6"
Stn. Steel	660701	1/2	1/4	2 1/2	20	8"-10"
Stn. Steel	660702	3/4	1/4	3 1/8	20	12"-16"

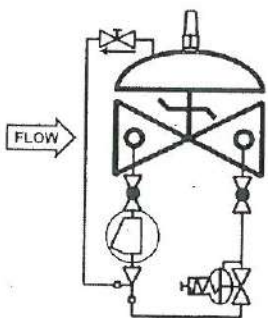


MATERIALS

Bronze, ASTM B62
 Optional mesh sizes: 50, 100
 Stainless Steel, CF8-M (316)
 Optional mesh sizes: 60, 80, 100
 Screens are stainless steel

SCHEMATIC SYMBOL

The Model 159 Y-Strainer is shown on OCV Valve Schematics as:



EXAMPLE: Shown here on a MODEL 127-3 Pressure Reducing Valve

MAINTENANCE

Routine cleaning and checking of the Y-Strainer will aid in keeping the control valve functioning properly. Pilot system isolation ball valves are supplied on valves equipped with the Model 159 Y-Strainer. These allow flushing of the screen through the blow off port, or removal of the screen itself for manual cleaning.

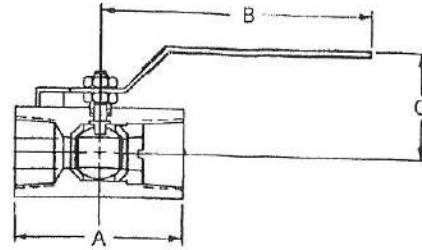
Y-Strainer Pilot 159

DESCRIPTION



The Model 141-4 Ball Valve is a 1/4-turn shutoff device used for isolating the pilot system from the main valve. They are extremely useful for performing routine maintenance and troubleshooting.

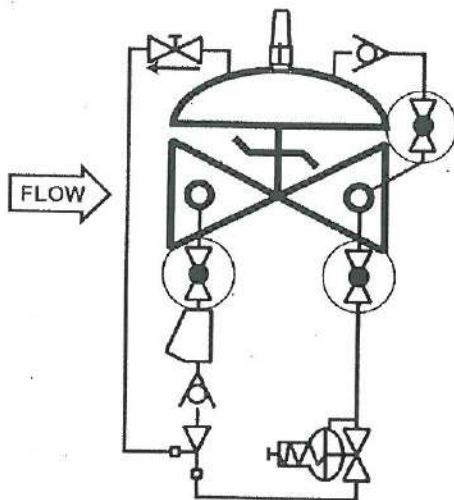
Ball valves are standard on water service valves; optional on fuel service valves.



MODEL 141-4 MATRIX

MATERIAL	PART NUMBER	INLET/OUTLET (NPT)	A	B	C	USED ON VALVE SIZE*
Bronze	680100	3/8	1 3/4	3 1/2	1 7/8	1 1/4"-6"
Bronze	680101	1/2	2	3 1/2	2 1/4	8"-10"
Bronze	680102	3/4	3	4 3/4	2 1/4	12"-16"
Stn. Steel	680700	3/8	2	3 3/4	2 1/8	1 1/4"-6"
Stn. Steel	680701	1/2	2 1/4	3 3/4	2 1/2	8"-10"
Stn. Steel	680702	3/4	3	4 3/4	2 1/4	12"-16"

SCHEMATIC SYMBOL



The Model 141-4 Ball Valve is shown on OCV Valve Schematics as:



EXAMPLE: Shown here on a MODEL 127-4 Pressure Reducing / Check Valve.



DESCRIPTION

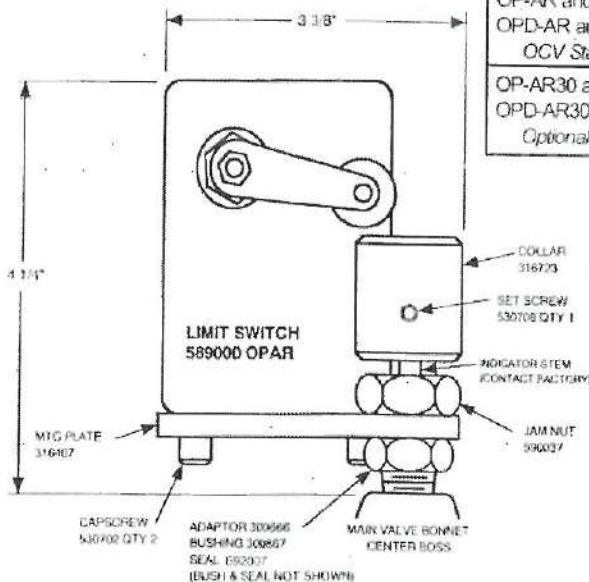
MODEL 31 LIMIT SWITCH ASSEMBLY

- Provides electrical indication of valve position.
- Adjustable to any point of valve travel.
- Heavy-duty stem seal.
- Installed without disassembly of valve.
- Available in weatherproof or explosion-proof enclosures.
- SPDT contacts (standard) DPDT (optional)

The Model 31 Limit Switch Assembly is a device that uses movement of the valve stem to make or break electrical contacts at designated points in the valve travel. It consists of an adaptor threaded into the center port of the valve bonnet, a rod threaded into the main valve stem, a heavy-duty stem seal, an actuating collar, and the switch unit. It may be installed on virtually any OCV control valve, and can be done so without any disassembly of the valve itself.

WHERE USED - Standard on Series 125/126 Pump Control Valves.
Optional on all other series control valves.

MODEL 31 ASSY MATRIX



SWITCH TYPE	VALVE CLOSED	VALVE OPEN
OP-AR and EX-AR (SPDT) OPD-AR and EXD-AR-3 (DPDT) <i>OCV Standard Configuration</i>	N.C. contact(s) closed N.O. contact(s) open Switch roller OFF collar	N.C. contact(s) open N.O. contact(s) closed Switch roller ON collar
OP-AR30 and EX-AR30 (SPDT) OPD-AR30 and EXD-AR30-3 (DPDT) <i>Optional configuration</i>	N.C. contact(s) open N.O. contact(s) closed Switch roller ON collar	N.C. contact(s) closed N.O. contact(s) open Switch roller OFF collar

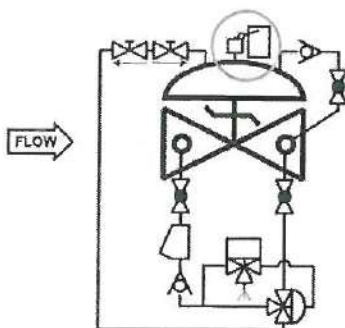
VALVE SIZE	PART NUMBER OP-AR (SPDT) Weatherproof	PART NUMBER EX-AR (SPDT) Explosion proof
1 1/4" - 1 1/2"	Consult factory	Consult factory
2" - 4"	252710	252413
6" - 8"	252720	252423
10" - 12"	252730	Consult factory
14" - 16"	252740	Consult factory

These part numbers include Buna-N stem seal. Consult Factory for part numbers on DPDT, other stem seals, and all model 31 switches shown in the Actuation matrix.

NOTE: Factory recommended valve installation should allow for indicator rod to be in the vertical position.

SCHEMATIC SYMBOL

The Model 31 is shown on OCV Valve Schematic as:



EXAMPLE:
Shown here on a Model 125 Pump Control Valve

ELECTRICAL RATING

SPDT: 15 amps @ 125-480 VAC
1/2 amp @ 125 VDC, 1/4 amp @ 250 VDC
DPDT: 10 amps @ 125-250 VAC
0.3 amp @ 125 VDC, 0.15 amp @ 250 VDC

ENCLOSURES

OP Switches Weatherproof NEMA 4
EX Switches Explosion Proof NEMA 7, 9

MATERIALS

Indicator Rod: Stainless Steel
Adapter: Stainless Steel
Collars: Stainless Steel

Limit Switch Assembly 31



Global performance. **Personal** touch.