

Hydraulic accelerator, 3-way metal relay-valve

The 66-210 is a 3-way, hydraulically operated, diaphragm actuated normally close relay-valve which is designed to meet the requirements of hydraulic valves control functions, particularly when fast reaction is required. The body contains two seats, a fully supported frictionless diaphragm and a guided shaft. When pressure command is applied one disc forms a tight seal with the valve seat and when vented the other disc seals drop tight.

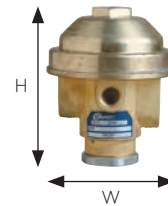


Features

- A 3-way relay- valve designed for accelerate the response of the valve function
- Large water passages
- Tough and durable construction
- High-grade materials
- Can be used with any hydraulic control valve sizes
- Versatile design enables wide range of applications
- Simple design

Typical applications

- Open or close a valve by external pressure command - RC
- Accelerator for On/Off commands
- On/Off control for 2-way regulating functions

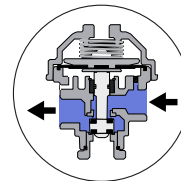


Technical data

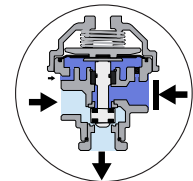
General		
Pressure rating	25 bar / 360 psi	
Operating pressure range	1 - 25 bar / 15 - 360 psi	
Fluid temperature	80°C max. / 175°F max.	
Weight	1.3 kg / 2.86 lbs	
Materials	Standard	Optional*
Body and bonnet	Brass	SST
Elastomers	NBR	
Internal parts	SST+Brass	SST
Spring	SST	
Dimensions		
H (Height) max.	104 mm / 4.09"	
W (Width)	85 mm / 2.56 "	
Port Connections		
1, 5	NPT ¼"	
2, 3, 4	NPT ½"	

* other materials available upon demand

66-210 Standard version

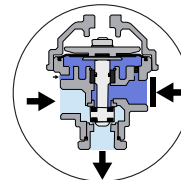


De-pressurized command - Closed valve

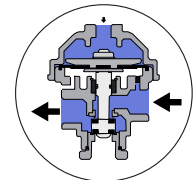


Pressurized command - Opened valve

66-211 No spring, plugged passage version

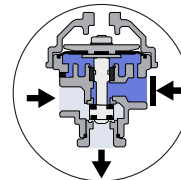


Port 1 command - Opened valve

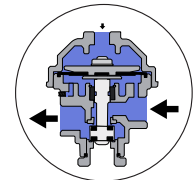


Port 5 command - Closed valve

66-213 No spring, Opened passage version



De-pressurized command - Opened valve



Pressurized command - Closed valve

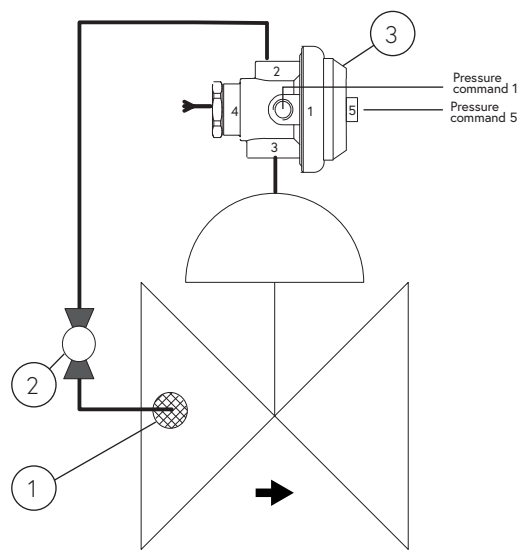
Installation

Main components

#	Description
1	Self flushing filter
2	Isolation ball valve
3	66-21X Relay valve

Connections

Port	66-210	66-211	66-213
1	Command	Command	Plugged
2	Upstream	Upstream	Upstream
3	Valve cntr. chamber	Valve cntr. chamber	Valve cntr. chamber
4	Vent	Vent	Vent
5	-	Command	Command



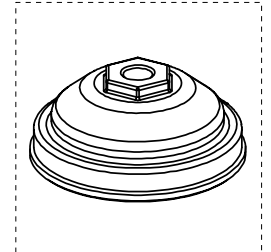
Sample drawing. Consult Dorot for the assembly design to fit your needs.

Catalogue numbers

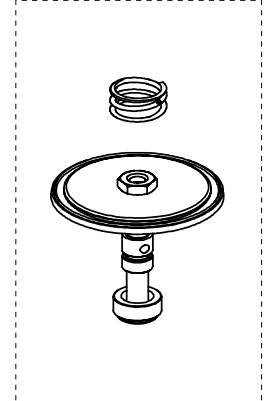
Description	Catalogue number
Bonnet kit	661026621000000
Internal parts kit	661206621000000
Body kit	661016621000000

Spare parts

Bonnet kit



Internal parts kit



Body kit

